



# Possible Quick Builds near Merrick-Moore Elementary

By Rohit Iyengar, Annalisa Sims, and Sage Weatherwax

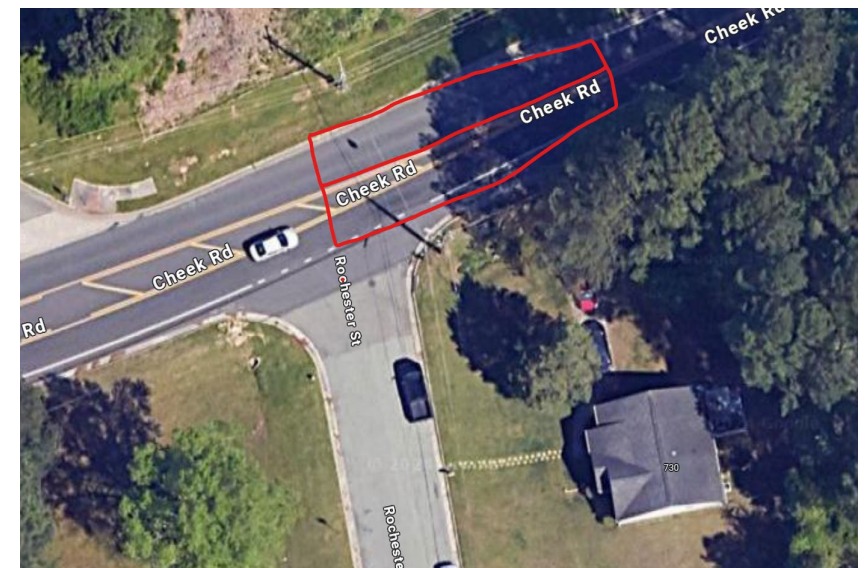
# Background and Importance

- Form of tactical urbanism -> mostly long-term fixes
- Projects that are lower budget and short time span.
  - The planning process is on average about a year.
  - Materials are amenable to smaller changes
- Benefits are more than just safety of the neighborhood
  - Increased walkability by promoting active transport
  - Extremely cost-effective and low budget
  - Very quick to implement and operationalize
- Usually run by city government or similar agency



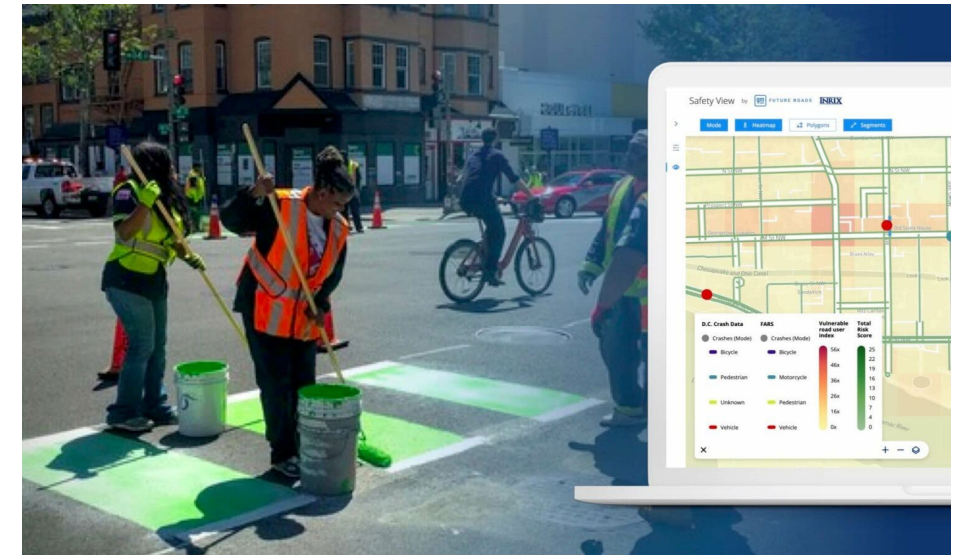
# Potential Solution: Speed Cushions

- Form of speed bumps that balances traffic flow and lower speeds
  - This is especially important for emergency vehicles to past through it.
- Usually used on roads with speed limits of 30 mph or less
  - Perfect for the roads outside Merrick Moore Elementary
- Only materials needed are rubber-raised platforms
  - Much more expansive than paint but other materials.
- Located near the intersection of Cheek Road and Rochester Street



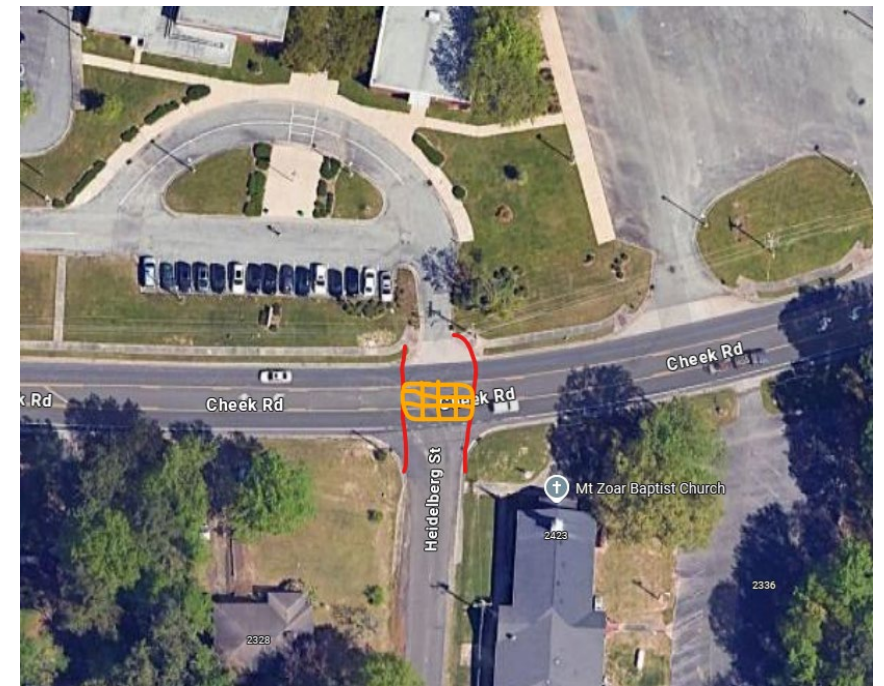
# Potential Solution: Highly Visible Crosswalks

- Utilizes unique patterns to alert drivers about pedestrians.
  - Can reduce crashes between 23% to 45%.
- The materials are pretty low-budget relatively speaking:
  - Chalk, tape, stencils for temporary use.
  - Paint if it's going to be a more permanent fixture.
- Usually placed on uncontrolled intersections or mid-block crossings.
  - The narrows roads on most of the surrounding streets makes it harder.
- Probably located near the small intersection outside the church.
  - Need to confirmed by a license engineer



# Potential Solution: Pedestrian Refuge Islands

- Provide space for pedestrian to cross the street
  - Helps in pedestrian safety
  - Reduces vehicle speed
- Materials are pretty low-budget
  - Temporary: cones and planters
  - Permanent: paint
- Placed in dangerous intersections with 60 feet wide lane
  - The lack of sidewalks makes this challenging but doable on Cheek Road.



# Limitations

- General layout of the road makes quick-builds less feasible
  - Narrower driving lanes and sidewalk width
  - Lack of sidewalk coverage makes it harder to put this infrastructure
  - The median is also a barrier as well.
- There are residential neighborhoods in the near vicinity of Merrick Moore Elementary
  - These projects could be major disruptions and congestion.
  - Important to get community buy-in before pursuing it.
  - Projects might increase noise pollution which effects residents.